

Axle Machining

DATASHEET

High Quality Parts is a precision machine shop that specializes in machining heavy equipment axles and assemblies. Axles are essential devices found in many types of vehicles and mechanical systems. It is a fixed or rotating shaft that a wheel, pulley, or other object rotate around or in unison. High Quality Parts has expertise in axle machining constructed from standard and exotic metals with complex geometry to meet or exceed the most demanding tolerances. We are a trusted Tier 1 supplier of high-quality prototypes and high volume precision metal components to leading OEMs across many industry sectors.

Axle Types:

- Dead Front
- Line Front
- Semi-Floating Rear
- Full-Floating Rear
- Three Quarter Floating Rear
- Stub
- General Industrial



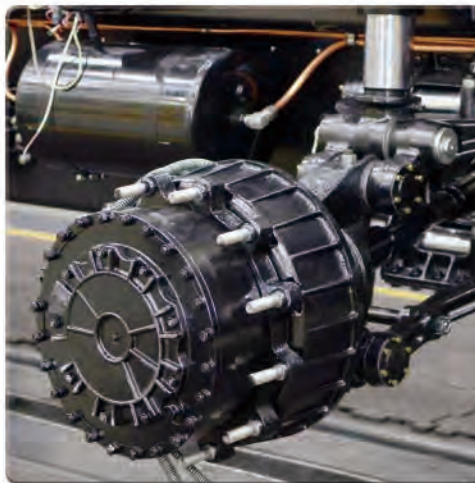
Industry Applications: Aerospace, Defense, General Industrial, Heavy Equipment, Military, Mining, and Transportation

Material Types: castings, forgings, fabricated weldments, billets, bar stock, and plate

Metal Construction: aluminum, armor plate, beryllium, brass, bronze, chromium, copper, gammalloy, Hastelloy, Incoloy, Inconel, Invar, manganese, molybdenum, Monel, nickel, Nitralloy, platinum, powdered metals, stainless steel, Stellite, titanium, Waspaloy, zinc, and many other superalloys

Services: Multi-Axis Machining, 5-Axis Machining, CNC Milling | Vertical and Horizontal, CNC Turning | Vertical and Horizontal, CNC Engineering, CNC Inspection, and Special Processes Integration - Nadcap Accredited

Certifications: AS 9100D | ISO 9001:2015 and an ITAR Registered Manufacturer



China High Quality Parts, Inc.

China High Quality Parts, Inc.

inquiry.hq@chinamanufacturingparts.com

tel.: +86-755-33857819

Fax: +86-755-33857820

Tongfuyu Industrial Zone, Buyong, Shajing, Baoan, Shenzhen,

China. 518104